

Coral Reef Center: Geography Reading a Map



You will need:

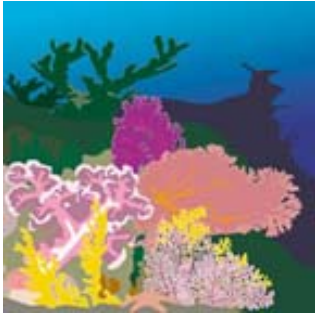
a pencil
a globe or world
map



Activity

- Use a globe or a world map to find the locations in each question.
- Use a compass rose to find the correct cardinal direction for each question and then circle the correct answer.

Coral Reef Center: Geography – Reading a Map



Use a map or globe and a compass rose to find the cardinal direction to correctly complete each sentence. Circle the correct answer.

1. Belize's coral reef is (SE / SW) of Florida's coral reef.
2. The Philippine Islands are (NE / NW) of the Australian Great Barrier Reef.
3. The coral reefs of the Red Sea Riviera are (NW / SE) of the Australian Great Barrier Reefs.
4. The reefs of Bermuda are (SW / NE) of the Belize's coral reefs.
5. The reefs of the Gulf of Mexico are (east / west) of the coral reefs of the Red Sea Riviera.
6. India is (NNW / SSE) of the Great Barrier Reefs in Australia.
7. The coral reefs of the Red Sea Riviera are (SSW / SSE) of Italy.
8. The coral reef in the Florida Keys is (NNW / SSE) of Madagascar.
9. Japan is (NNW / NNE) of the coral reefs of the Red Sea Riviera.
10. The reefs of Belize are (SSW / SSE) of Alaska.

Answer Page

1. SW
2. NW
3. NW
4. NE
5. west
6. NNW
7. SSE
8. NNW
9. NNE
10. SSE