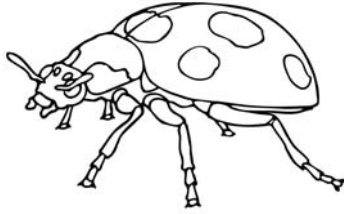


## LADYBUG SIMILES



Similes compare two things by using the words **like** or **as**. Think of things about ladybugs. Write some similes about them.

Here is a simile about a ladybug:  
*The ladybug was **as** hungry **as** a bear.*

Now your turn:

1. \_\_\_\_\_
2. \_\_\_\_\_
3. \_\_\_\_\_
4. \_\_\_\_\_
5. \_\_\_\_\_

Pick the one you like the best. Write it in the box below and illustrate it.

---