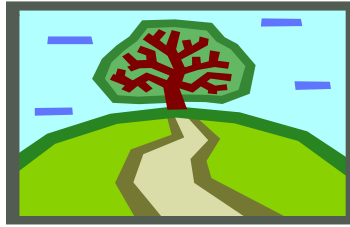


Oh, No! Not Again!



Sunshine sprinkled the grass as the children ran around Dawson Park and played hide-and-seek. Jenny and Garrin were hiding from Ana. They needed to find a good hiding place, because Ana always seemed to be able to find them. They ran behind the old maple tree in the middle of the park. They tried to catch their breath, and at the same time make themselves invisible.

“Twenty-three, twenty-four, twenty-five-- ready or not, here I come,” shouted Ana.

Ana started running all over the park. She looked behind the slide, but she didn’t see Jenny and Garrin. She ran to the monkey bars and climbed to the top. She still didn’t see them. Then Ana spotted the big maple tree in the middle of the park. She climbed down from the monkey bars, and ran to the tree. She stood on one side of the tree. Jenny and Garrin stood on the other side of the tree, holding their breath. Ana looked around, but she didn’t see them.

Slowly, Ana walked around the tree. She kept her back to the bark so she could see everything. Jenny and Garrin also walked slowly around the tree. They tried to stay just enough ahead of Ana that she wouldn’t see them. They took one more step and ...

“You’re *it!*” shouted Ana, laughing at the looks on Jenny and Garrin’s faces.

“Oh, no! Not again!” they groaned.

“Ana, you always find us!” said Garrin. He turned to Jenny and said, “I’ll be *it* this time.”

Ana laughed with glee, and told Garrin to start counting as she ran to hide.

Answer the questions about “Oh, No! Not Again!”

1. Where were the children playing?
 - a. at home
 - b. at school
 - c. in the park
 - d. in the gym
2. What was the weather like that day?
 - a. rainy
 - b. snowy
 - c. cold
 - d. sunny
3. What game were the children playing?
 - a. kickball
 - b. hide-and-peek
 - c. baseball
 - d. basketball
4. Why did Garrin and Jenny have to find a really good place to hide?
 - a. because Ana was a fast runner
 - b. because Ana was good at finding them
 - c. because Ana was a good reader
 - d. because Ana was very tall
5. Where did Ana look for the children first?
 - a. on monkey bars
 - b. in the maple tree
 - c. at home
 - d. behind the slide
6. Why do you think Ana climbed to the top of the monkey bars?
 - a. She could see the whole park from there.
 - b. She liked climbing up high.
 - c. She wanted to scare the children.
 - d. She likes the park.
7. Who was *it* for the next game?
 - a. Ana
 - b. Garrin
 - c. Jenny
 - d. Susan