

Word Sort _at

bat

abcteach.com



abcteach.com

cat

abcteach.com



abcteach.com

hat

abcteach.com



abcteach.com

mat

abcteach.com

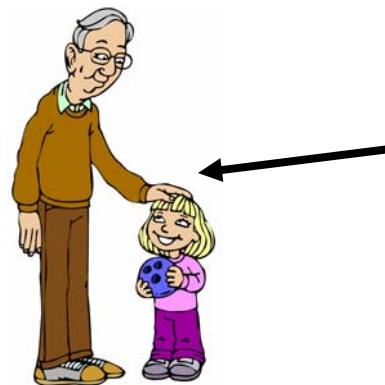


abcteach.com

Word Sort _at

pat

abcteach.com



abcteach.com

rat

abcteach.com



abcteach.com

sat

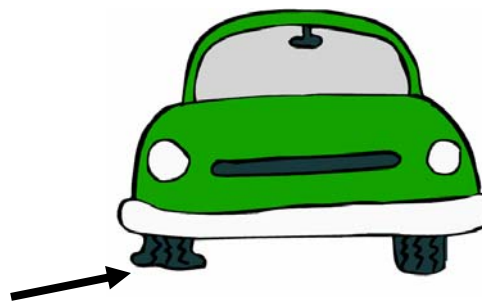
abcteach.com



abcteach.com

flat

abcteach.com



abcteach.com

Word Sort _at

at

abcteach.com

that

abcteach.com

fat

abcteach.com



abcteach.com

tat

abcteach.com



abcteach.com

chat

abcteach.com



abcteach.com

Word Sort _at

brat

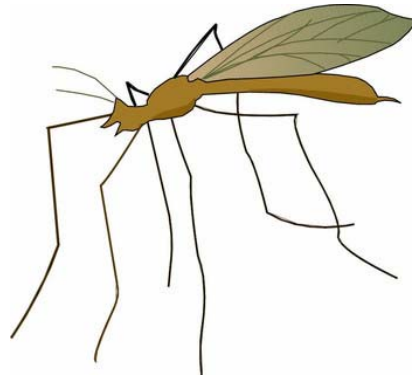
abcteach.com



abcteach.com

gnat

abcteach.com



abcteach.com

vat

abcteach.com



abcteach.com

Word Sort _at

Center Activity

Copy the cards onto heavy paper and cut them out. Laminate the cards for greater durability. If you would like students to be able to self-check, write the rhyme on the back of the cards.

Choose two word families for the student to sort. Also include the card from this page showing the name of the word family (**_at**). You can use picture cards or word cards or a combination of both. You may need to identify the pictures for the students. Option: The student can use the worksheet to write the words after they are sorted. Write the word families (example: **_at** and **_ap**) in the top spaces, and write the words under the correct word family.

